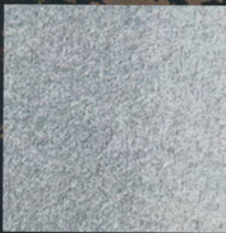


MATERIALS AND FINISHES

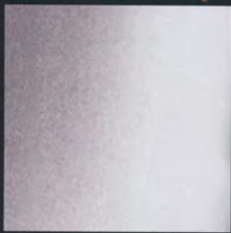
STAINLESS



#4 Stainless
(#304 Stainless)



Non-directional
Stainless



#8 Stainless
Mirrored

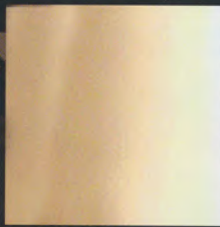
BRASS



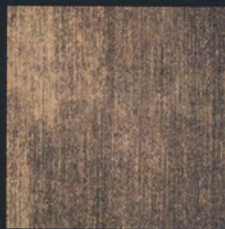
#4 Brass
(60/40 Naval Brass)



Non-directional
Brass



#8 Brass
Mirrored



Brass Oxidized

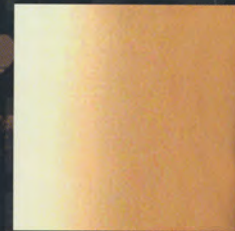
BRONZE



#4 Bronze
(90/10 Bronze)



Non-directional
Bronze



#8 Bronze
Mirrored